



**ARPHEN**

**(Association of Rural People for Health and Educational Needs)**

**Regd.off: - C-5/24/3:4, Sector -5, C.B.D Navi Mumbai -400615**

**Admin. Off: - ARPHEN ROW HOUSE, C-35/32, sector 12,  
Kharghar, Navi Mumbai-410210**

**Phone: 022 27744315 Mobile:9869005094**

**EDUCATION!**

**AWARENESS!!**

**DEVELOPMENT!!!**

[www.arphen.org](http://www.arphen.org)

[arphen123@gmail.com](mailto:arphen123@gmail.com)

**ARPHEN**

## Managing Committee

|                          |   |                                                                                                                                  |
|--------------------------|---|----------------------------------------------------------------------------------------------------------------------------------|
| <b>President</b>         | : | <b>Shri. Y.A. Shirodkar</b><br>Retired from CIDCO                                                                                |
| <b>Vice President</b>    | : | <b>Dr. J.B. Adusule</b><br>Principal Dr. Babasaheb Ambedkar college of social work , Dhule. MSW, L.L.B, PGDHRD, PH.D, POST Doct. |
| <b>General Secretary</b> | : | <b>Shri. P.K. Nayak</b><br>B.A, MSW, D.E.H.M.<br>Retired from MCGM (Edu. Dept)                                                   |
| <b>Joint Secretary</b>   | : | <b>Mr. D.D. Malwad</b><br>B.A., M.S.W                                                                                            |
| <b>Treasurer</b>         | : | <b>Shri. Pankaj Patel</b>                                                                                                        |

## Members

|                                                    |                       |
|----------------------------------------------------|-----------------------|
| <b>Miss. M. Purandare</b><br>M.S.W Working for L&T | <b>Mrs. P. Preeti</b> |
| <b>Mrs. N. Sneha</b>                               | <b>Mrs. S. Dipali</b> |

## School Management Committee

|                                                                                |                                |
|--------------------------------------------------------------------------------|--------------------------------|
| <b>Shri. P.K. Nayak</b><br>B.A, MSW, D.E.H.M.<br>Retired from MCGM (Edu. Dept) | <b>Ms. Gurpreet Kaur Gadri</b> |
| <b>Ms. Rajashree .</b>                                                         | <b>Ms. Nikita Bhosale</b>      |

## Auditors

M/s. M.V. M & co  
Chartered Accountants, Navi Mumbai.

# ARPHEN

## ❖ Organizational Background

ARPHEN (Association of Rural People for Health and Educational Needs) was established in 1986 and works in support of almost 50,000 people, quarry workers, Adivasi and slum-dwellers in the Thane-Belapur, Kharghar belt of Navi Mumbai who live in basic shelters. The Non-Government Organization (NGO) along with the organization's networking partners facilitates the provision of basic healthcare and education for the communities. The focus is on empowerment of the groups and assisting them in gaining access to basic facilities. SHG's, Balpanchayat, Bridge class, Follow Up and Referral of HIV AIDS infected and affected cases to local hospital, working on amenities, food security (PDS), empowerment of community people specially women and literacy component are the project conducted. We have also started a pre primary school at Kharghar from this academic year.

ARPHEN believes in developing strong linkages between govt. and N G Os who are our committed partners to work towards achieving cent percent school enrolment, full empowerment, good health and basic amenity with right to living. People behind ARPHEN are the professional social workers, who have wide range of experience in community development.

## ❖ Our Vision & Mission

Improve the standard, health, food, Education, financial inclusiveness of poor and disadvantage people living in Navi Mumbai and Mumbai.

## ❖ OBJECTIVES

1. Every Child deserves the right to child hood, education, health and participation in matters concerning their life
2. Every person deserves dignity, shelter, safety, basic health care, education, employment and a decent life.
3. Empower the rural and urban poor with information, awareness, capacity and sensitize the mainstream communities to accept and integrate the underprivileged in the process of development.
4. Improving and availing food security to the poor with the key strategies for developmental programs.
5. Reduce the Transmission Risk of HIV/AIDs and communicable deceases by promoting Awareness.

## ❖ Infrastructure

We have our own Row house, G+2 storey structure & terrace with all necessary infrastructures at Kharghar for administration, meetings and trainings. In the field, we have two spacious community centers built by London Metropolitan University, architecture Dept. and one field office on rent.

## ❖ Navi Mumbai - profile

Navi Mumbai is the world's largest planned city. It was initially planned with a specific purpose to decongest Mumbai and become an alternative haven for the multitudes that throng Mumbai from different parts of India. Today, Navi Mumbai is a close competitor to Mumbai in every respect.

Health services in Navi Mumbai include hospitals and clinics of every possible kind - allopathic, homeopathic, ayurvedic etc. There are plenty of private hospitals and Navi Mumbai Municipal Corporations hospitals in the city. The hospitals are well equipped with the latest technologies and specialist doctors. Every possible aid in emergency cases is available in the NMMC Hospitals. NMMC has recently introduced services of Super Specialty Hospital at NMMC hospital with the help of private operator. Also available are the day and night chemists in the city. Navi Mumbai Municipal Corporation's Health Department holds the responsibility of checking the spread of epidemics in its regions. Even though, the quarry area, MIDC Industrial workers and the slum population is out of reach and unaware of these facilities.



## ❖ Navi Mumbai, Turbhe Area

**Navi Mumbai** is a city on the west coast of the Indian state of Maharashtra. It was developed in 1972 as a twin city of Mumbai, and is the largest planned city in the world, with a total area of 344 km<sup>2</sup> and 163 km<sup>2</sup> under the jurisdiction of the Navi Mumbai Municipal Corporation (NMMC)<sup>[1]</sup>. Navi Mumbai lies on the mainland on the eastern seaboard of Thane Creek. The city limits stretch from Airoli near Thane in the north, to Uran in the south. The length of the city is almost the same as that of Mumbai. The Vashi and the Airoli Bridges connect Navi Mumbai to Mumbai. A new link between Nerul and Uran is under construction. The costliest and most developed areas of Navi Mumbai are Vashi and Nerul. As a result, Vashi is known as the king of Navi Mumbai while Nerul is considered as the queen of Navi Mumbai.

Navi Mumbai has a population Of 2,600,000 of which approximately 800,000 come from Nerul and about 700,000 from Vashi with the remainder from Belapur, Sanpada, Airoli, Ghansoli and Koparkhairne and surrounding areas.

Navi Mumbai is a part of the Mumbai Conurbation. NMMC is also rated amongst the richest corporations in Asia. Navi Mumbai is the only Indian city to be featured in the National Geographic. The present population of Navi Mumbai is 0.75 million and is estimated to grow to 2 million by the turn of the century.

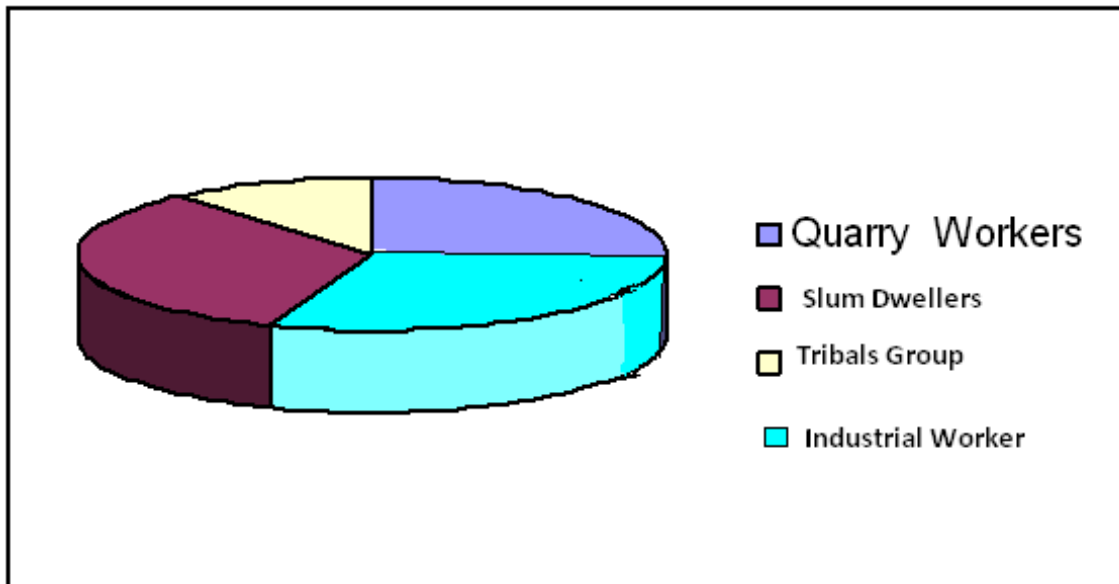
The majority of Navi Mumbai's population is young, with 28% in the age group of up to 15 years, 55% in the age group of 15-44 year bracket and 13% aged 45–59).

Around 19.69 percent of the total population in Navi Mumbai is staying in hutment or slum colonies. Due to escalating costs of land and materials. Being, newly developed city, marketing, business industries like quarries and other factories have groomed up. All this factor have contributed to the population surge in this area. Vast possibilities of new employment and small petty businesses occur in Navi Mumbai. Construction of new nodes and sites, truck terminal, development of roads are expanding in full swing. Turbhe slums and quarry areas hutment are the big spots of Navi Mumbai comprising of more than 100000 population. Mostly migrants are living in these specific areas. Various single living persons are also situated here. Sex is often seen as a common form of entertainment, so they go to K.K.Galli (red light area). Many illegal and antisocial elements are active in this area. Women trafficking, Mobile sex work etc. are, common in this area. Most of the floating sex workers are taking rental accommodation for their business. However in terms of health, nutrition, and education and in other areas there is large neglect. The Navi Mumbai has been culturally rich in terms of its traditions and financially. But in development process 30% of the population lives in the slum areas.. The sex ratio is around 840/ 1000 (women/men). Also the SC population is about 60% in all these blocks. The literacy rate in this pocket is about 40% only.

### ❖ Target population

ARPHEN supports more than 15,000 quarry workers, 3,000 Tribal groups and 20,000 slum-dwellers and 12,000 Industrial workers located in Thane-Belapur and Kharghar. These communities constitute the poorest inhabitants of Navi Mumbai are mainly illiterate. Therefore information regarding rights and entitlements and access to health and educational facilities is unavailable to them. They lack access to many basic civic facilities. The majority of these groups do not know of the range of available government systems and services which they are entitled to access.

The people living in the quarries, Industries and slums comprise of Skilled & unskilled workers from rural areas of Maharashtra, who moved there for work. Some of them have been living there for 15-20 years. The main language is Marathi, although some people speak Hindi and other languages.



**Figure 1: Breakdown of target population by location**

*Source: ARPHEN research*

Quarry workers – 15000  
Tribal -- 3000  
Slum- dwellers -- 20000  
Industrial worker- 12000

### ❖ **Target Area**

84 quarry inhabitants in the Thane Belapur quarry belt, Industrial workers of MIDC area & nearby slums. All areas put together we are targeting 50000 people including migrant.

### ❖ **Living Conditions**

Most people live in basic shelters provided by the quarry owners and are dependent on water trucks making daily deliveries. Thick dust constantly obscures the hills, covers the workers' shacks and coats the peoples' lungs. The heavy monsoon also causes problems. The Slum and industry workers either live in small huts or in the Industry itself.

Although the quarry owners provide the people living in the quarries with free houses and electricity, most quarry inhabitants live a hand-to-mouth existence. The money they earn is hardly enough to pay for food and clothes.

### ❖ **Achievements:**

1) "Navi Mumbai Bhushan" Award from Navi Mumbai Municipal Corporation for excellence in Social Work.

2) "Nave Shahar Samman" Award from Publisher for outstanding social work.

3) Award from IES college of Management for "Excellence in Corporate Social Responsibility."

4) The people from quarry area, especially women are empowered to approach any government or any office for their rights. 50 SHG's groups are managing themselves their routine accounts and bank transaction. 16 Balpanchayat and Sports groups are functioning in the project area .90% of children between 6 to 14 are enrolled in main stream education .

5) With great difficulties, We were able to convince Raigad Zilla parishad for TWO Bore wells at Fanaspada and Chapewadi of tribals and a primary school.

### ❖ **Legal Status**

Registered under:

1. The societies Registration Act-1860
2. The Bombay Public Trust Act-1950
3. Income Tax Exemption Act.80g & Section 12-A (a)
4. Home Ministry under FCRA-1976 & 2010

## Activities

---

**All our activities are aimed at capacity development of the people, especially women, leading to sustainable & Child centric community development.**

### **Balpanchayat**

ARPHEN gives maximum importance to children .Their right is top most in our priority. We have set up Balpanchayat and sport groups to develop the children in the age group of 10- 16. Teach them about things that affect their life and how to participate in the day to day life. The basis of Balpanchayat is development of the society through self development. This teaches the children how to participate in local self government and learn the basics of group living .Right to Education (RTE) is the key subject for these groups.

### **Women's group**

Self Help Groups (SHG's) and Mahila Mandals have been formed with support from ARPHEN's training schemes, focusing on leadership, social activities and saving schemes. Now there are competent group leaders who work independently with guidance from ARPHEN. All these groups are linked to banks and properly maintaining the registers of meeting minutes and accounts. We are working on starting of income generation schemes for these women for which we have already received 4 sewing machines.

### **Bridge classes**

The majority of children now also do not to school due to different reasons. Main reason is that there are no municipal schools nearby. Bridge classes are set up for Non school going children in the age group of 6 to 14. We follow the Maharashtra Government syllabus for the Bridge classes. Once we found the child is prepared to go to school, we make them appear for an assessment test by the Municipal school and they are admitted to Municipal schools from 1<sup>st</sup> to 4<sup>th</sup> std. according to their learning capacities.

### **H I V / AIDS**

Due to the new developments taking place in Navi Mumbai, more people are migrating to Navi Mumbai and HIV/AIDS is also in the rise. We are working on this epidemic by targeting single migrants for awareness, testing, counselling and treatment. This project initially covers 10,000 migrants with 15 staff. Planning to cover at least 20,000 migrants in near future.

### **Micro Insurance and financial inclusiveness**

The inclusive Life is in real danger at this place. They deal with all the dangers in their life. They have to face the accidents in the true sense of the term. We make available the scheme for life as well as accident policy. Where people make a small payment and their life is insured and some amount of savings they make in this process .



## **Food –Security**

Food is one of the main concerns of the people living in this area. They earn very meagre wages and most of their salary goes to food expense. Through this food security program ARPHEEN intends to bring these impoverished communities under governments public distribution system, have the means to access the regular food supplies in their locality at the public distribution centres. ARPHEEN through its successful advocacy with the government authorities is trying to get a ration cards to all the quarry workers families and availed retail shops for food distribution.

## **Health**

ARPHEEN believes in working along with Government and other N G O s in the field of Health Issues. We conduct regular capacity building sessions, awareness programs on health issues. Make people use the Government facility and refer the cases to hospitals.

## **Study classes**

The under privileged school going children who cannot afford tuitions and do not have place for studies are covered under study classes. They are provided place for studying with competent teacher.

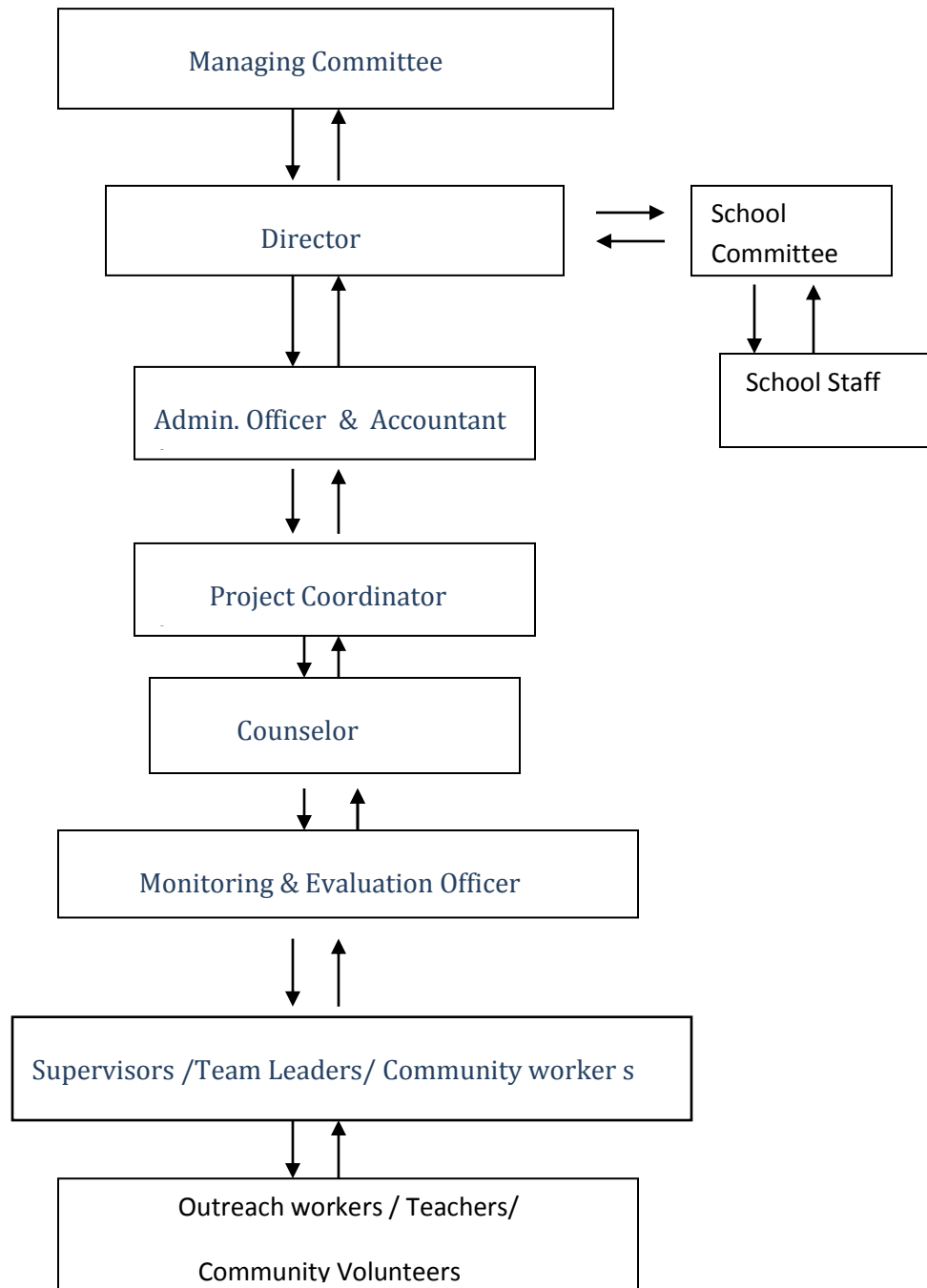
## **Early childhood Care Centre (ECCC)**

Early childhood care (ECC) program is conducted for the age group of 3 to 6. This program prepares the child to enter mainstream of education without dropping out from school.

## **T.B. AWARENESS PROGRAMMES.**

T. B. Awareness programmes are conducted in the project area from Nerul (Ramesh Metal quarry/Tata press area) to Turbhe, including M.I.D.C workers, Turbhe slum, Janta market, footpath dwellers, Hotels and Bars and shivaji nagar, Specially drivers. This program includes awareness meetings through games, surveys, mid media activities, sputum collection, testing, linking to DOTS and referrals.

## ARPHEN ORGANISATIONAL STRUCTURE



## Staff:

|                |                        |
|----------------|------------------------|
| Co-coordinator | : Ms. Kulsum shaikh    |
| Counselor      | : Ms. Shirin Pathan    |
| Accountant     | : Miss Rajashree       |
| M & E Officer  | : Manoj Bedekar        |
| ORWS           | : Marzia Rizvi         |
|                | : Sachin Shinde        |
|                | : Mosha Palakommu      |
|                | : Sarfaraz Khan        |
|                | : Ashish Halwai        |
|                | : Ganesh Shinde        |
| Doctor         | : Dr. Laxman S. Sharma |
|                | : Amar Mohite          |
| Teachers       | : Mrs. Lalita Kawde    |
|                | : Fatima Shaikh        |
|                | : Rekha Pawar          |
| School Staff   | : Ms. Poonam           |
|                | : Jayshree Koli        |

## **Bankers:**

State Bank of India, Konkan Bhavan Branch

Abhyudaya Co-op. Bank Ltd., C.B.D Branch

N. K. G.S.B. Co-op. bank Ltd, C.B.D. Branch

